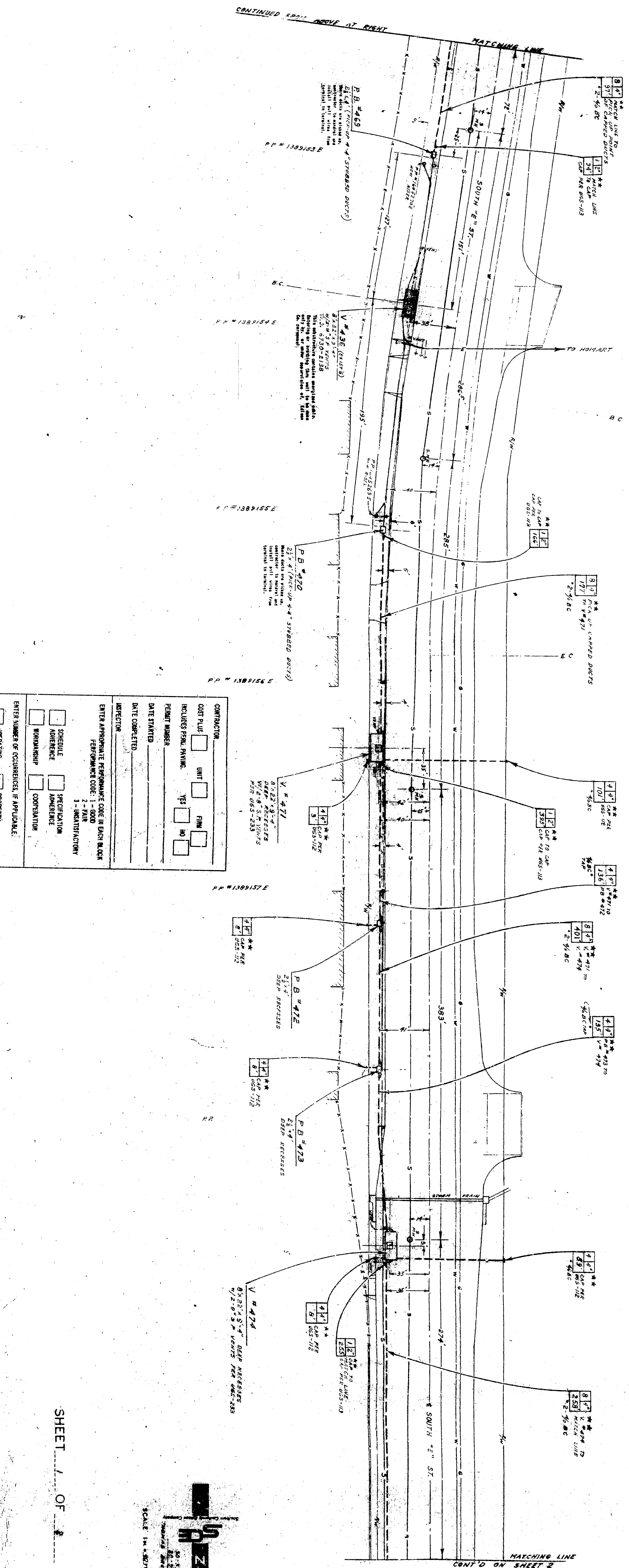


CONTINUED FROM ABOVE AT RIGHT



CONTRACTOR

COST PLAN UNIT FIRM

INCLUDES FINAL PLANING YES NO

PERMIT NUMBER _____

DATE STARTED _____

DATE COMPLETED _____

DIRECTION _____

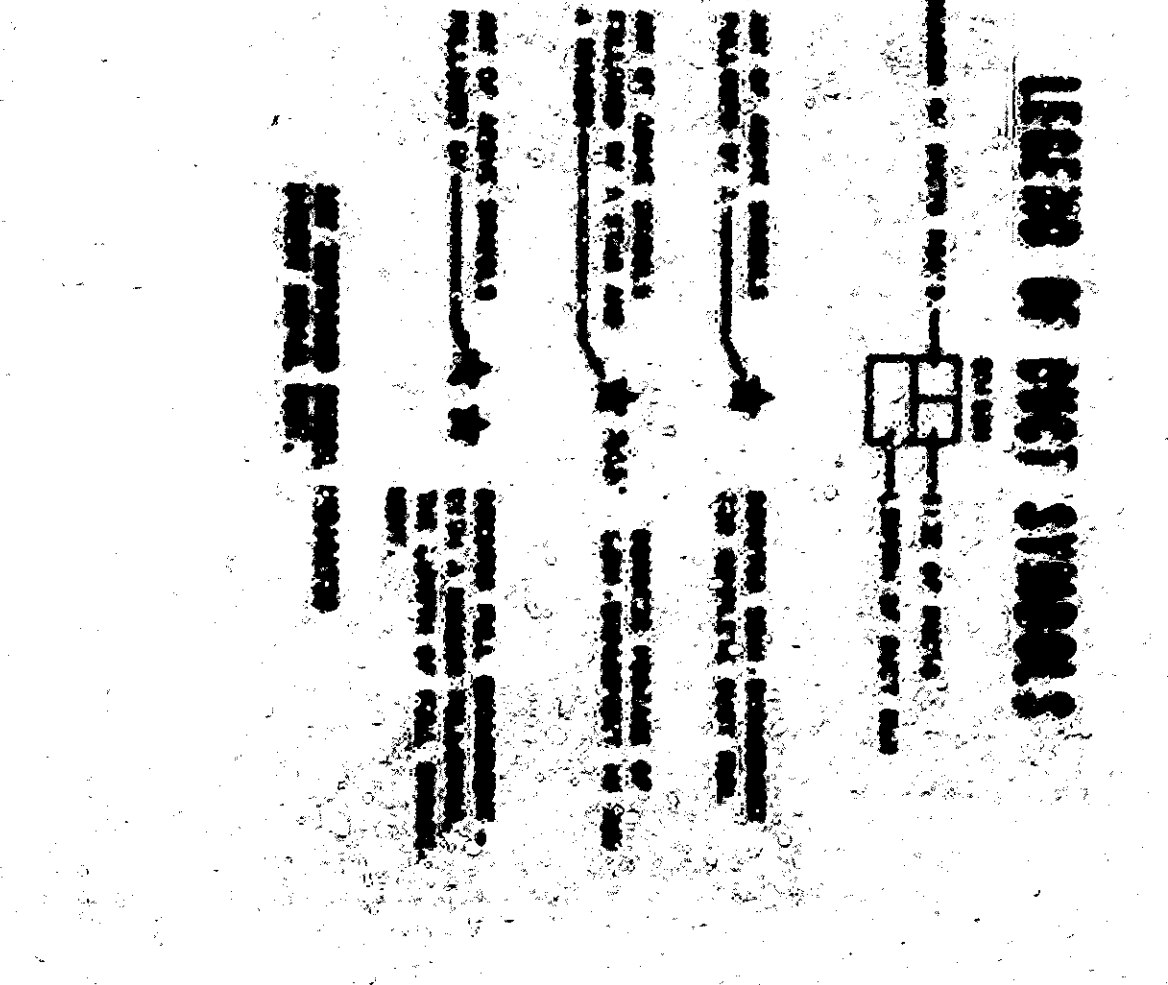
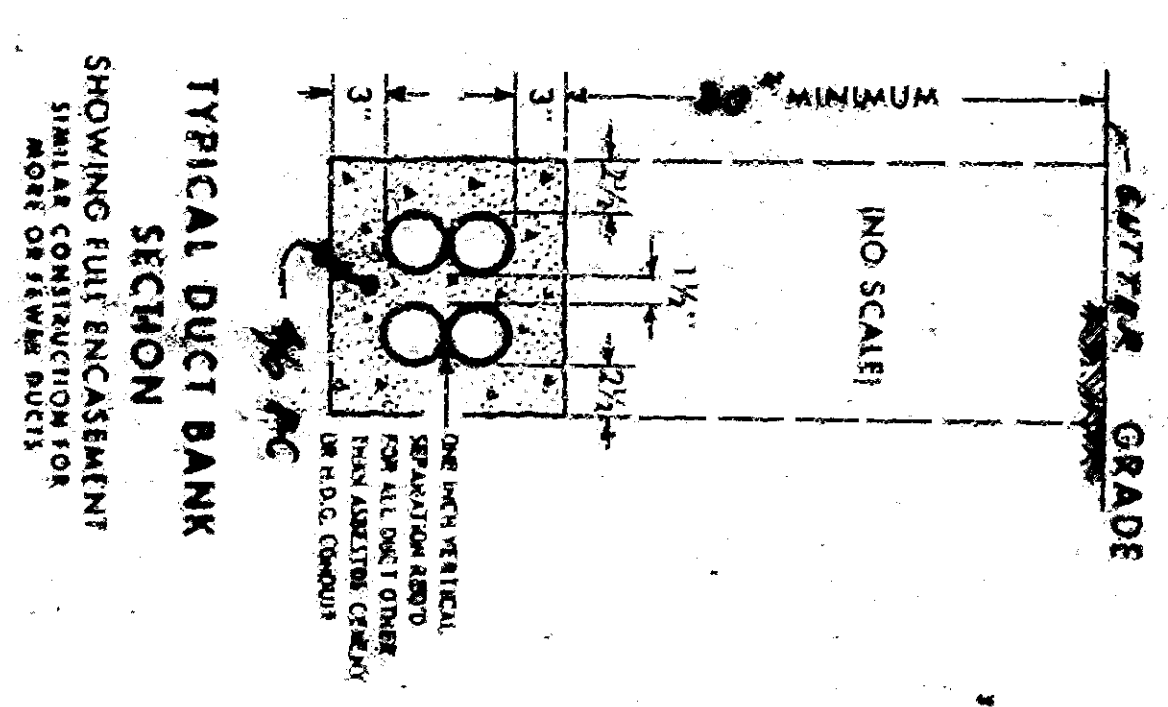
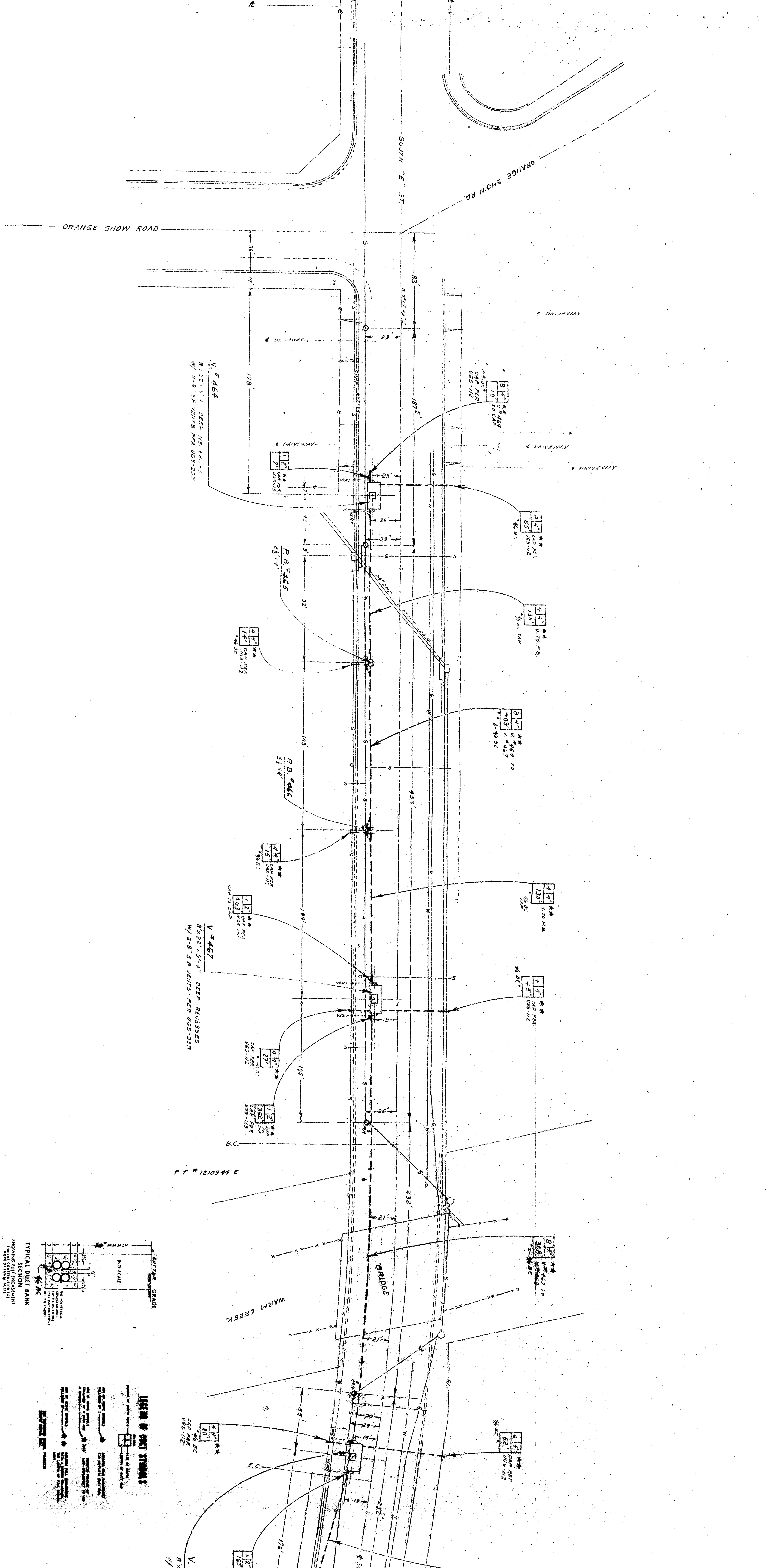
ENTER APPROPRIATE PERFORMANCE CODE IN EACH BLOCK

PERFORMANCE CODE: 1 - GOOD
2 - FAIR
3 - SATISFACTORY

ENTER NUMBER OF OCCURRENCES, IF APPLICABLE:

INTERFERENCE PROPERTY

PLANS _____



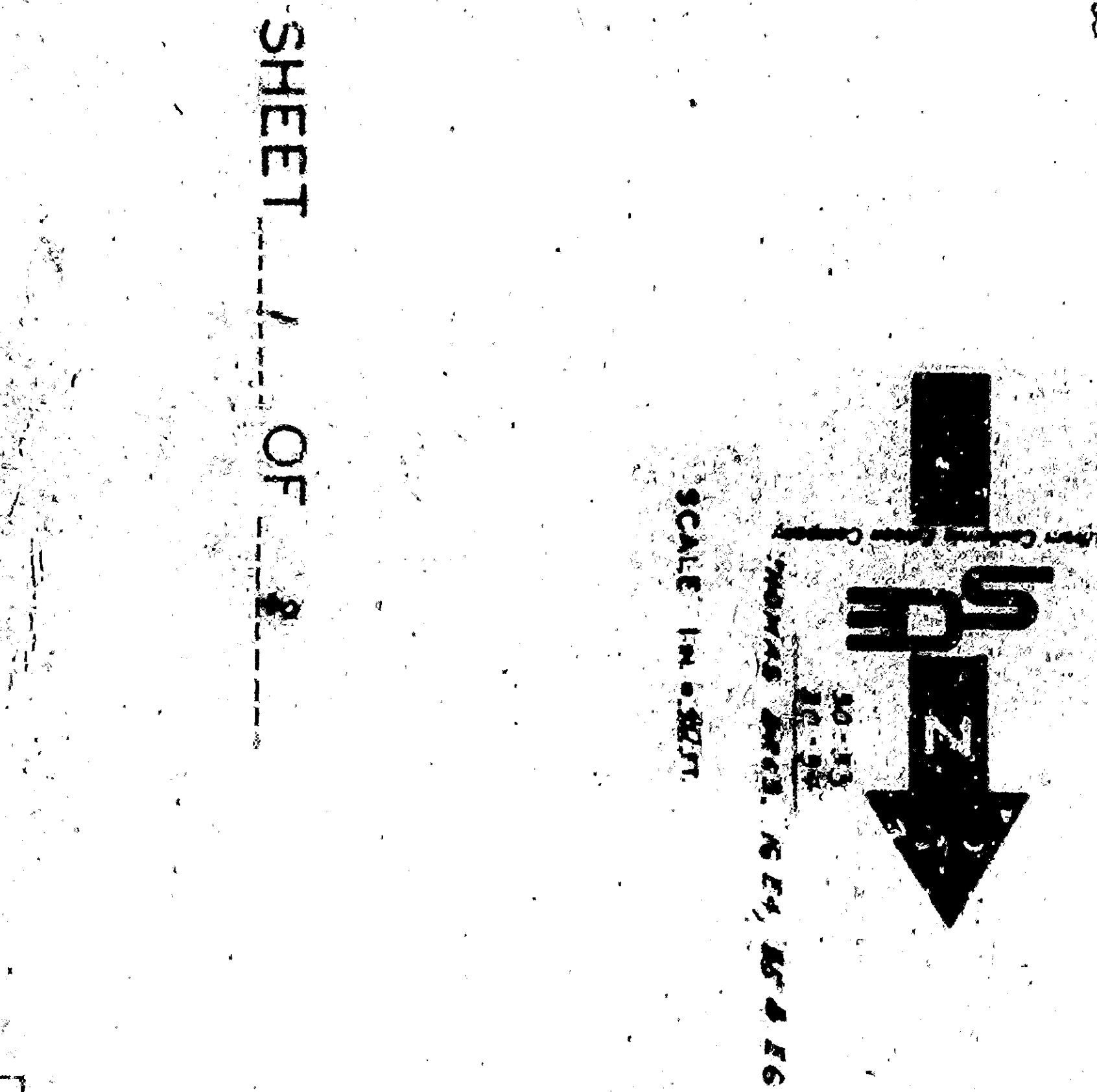
LIST OF MATERIALS
(EDISON CO.)

SEE UCI-88 FOR INDEX TO REFERENCE DRAWINGS

NO.	QTY.	DESCRIPTION	SIZE	UNIT
1	1	CONCRETE	12" x 12" x 12"	CU YD
2	1	CAST IRON	12" x 12" x 12"	PIECE
3	1	STEEL	12" x 12" x 12"	PIECE
4	1	CONCRETE	12" x 12" x 12"	CU YD
5	1	CAST IRON	12" x 12" x 12"	PIECE
6	1	STEEL	12" x 12" x 12"	PIECE
7	1	CONCRETE	12" x 12" x 12"	CU YD
8	1	CAST IRON	12" x 12" x 12"	PIECE
9	1	STEEL	12" x 12" x 12"	PIECE
10	1	CONCRETE	12" x 12" x 12"	CU YD
11	1	CAST IRON	12" x 12" x 12"	PIECE
12	1	STEEL	12" x 12" x 12"	PIECE
13	1	CONCRETE	12" x 12" x 12"	CU YD
14	1	CAST IRON	12" x 12" x 12"	PIECE
15	1	STEEL	12" x 12" x 12"	PIECE
16	1	CONCRETE	12" x 12" x 12"	CU YD
17	1	CAST IRON	12" x 12" x 12"	PIECE
18	1	STEEL	12" x 12" x 12"	PIECE
19	1	CONCRETE	12" x 12" x 12"	CU YD
20	1	CAST IRON	12" x 12" x 12"	PIECE
21	1	STEEL	12" x 12" x 12"	PIECE
22	1	CONCRETE	12" x 12" x 12"	CU YD
23	1	CAST IRON	12" x 12" x 12"	PIECE
24	1	STEEL	12" x 12" x 12"	PIECE
25	1	CONCRETE	12" x 12" x 12"	CU YD
26	1	CAST IRON	12" x 12" x 12"	PIECE
27	1	STEEL	12" x 12" x 12"	PIECE
28	1	CONCRETE	12" x 12" x 12"	CU YD
29	1	CAST IRON	12" x 12" x 12"	PIECE
30	1	STEEL	12" x 12" x 12"	PIECE

NOTES:

- For general specifications, see any US-233.
- Material shown on this plan is to be installed as shown.
- All work on this plan is to be done in accordance with the specifications.
- See notes on sheet 1 for details.
- See notes on sheet 2 for details.
- See notes on sheet 3 for details.
- See notes on sheet 4 for details.
- See notes on sheet 5 for details.
- See notes on sheet 6 for details.
- See notes on sheet 7 for details.
- See notes on sheet 8 for details.
- See notes on sheet 9 for details.
- See notes on sheet 10 for details.
- See notes on sheet 11 for details.
- See notes on sheet 12 for details.
- See notes on sheet 13 for details.
- See notes on sheet 14 for details.
- See notes on sheet 15 for details.
- See notes on sheet 16 for details.
- See notes on sheet 17 for details.
- See notes on sheet 18 for details.
- See notes on sheet 19 for details.
- See notes on sheet 20 for details.
- See notes on sheet 21 for details.
- See notes on sheet 22 for details.
- See notes on sheet 23 for details.
- See notes on sheet 24 for details.
- See notes on sheet 25 for details.
- See notes on sheet 26 for details.
- See notes on sheet 27 for details.
- See notes on sheet 28 for details.
- See notes on sheet 29 for details.
- See notes on sheet 30 for details.



SHEET 1 OF 2

DATE: 10/1/1957

BY: [Signature]

CHECKED: [Signature]

EDISON CO.